



PRICELIST - BOOKING CALENDER - FLOOR PLANS 2024
All prices are in EURO

Explanation:

A = Available

EV = Rent of entire Villa only

O = Occupied

S = Special deal

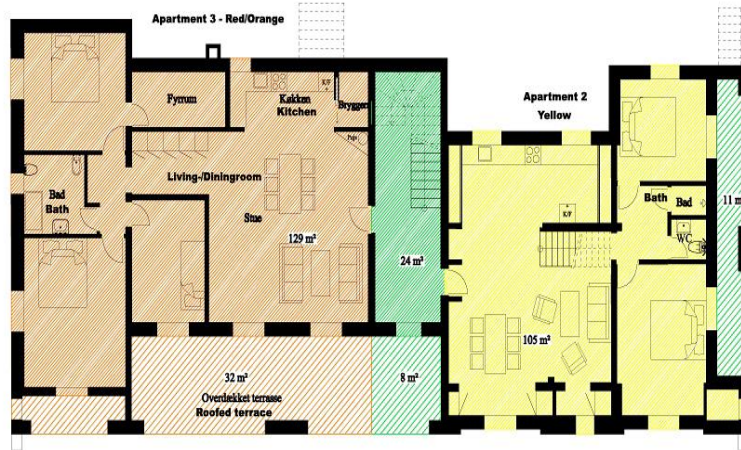
R = Reserved

Week	From	To	Entire Villa		Apartment 1 1. floor (Blue) 8 person		Apartment 2 Ground right (yellow) 8 person		Apartment 3 Ground left (red/orange) 6 person	
			A	3,712	EV/A	Rent of entire Villa only	EV/A	Rent of entire Villa only	EV/A	Rent of entire Villa only
1	30-Dec	6-Jan	A	3,712	EV/A	Rent of entire Villa only	EV/A	Rent of entire Villa only	EV/A	Rent of entire Villa only
2	6-Jan	13-Jan	A	3,712	A	1,311	A	1,311	A	1,125
3	13-Jan	20-Jan	A	3,712	A	1,311	A	1,311	A	1,125
4	20-Jan	27-Jan	A	3,712	A	1,311	A	1,311	A	1,125
5	27-Jan	2-Feb	A	3,712	A	1,311	A	1,311	A	1,125
6	2-Feb	9-Feb	A	3,712	A	1,311	A	1,311	A	1,125
7	9-Feb	16-Feb	A	3,712	A	1,311	A	1,311	A	1,125
8	16-Feb	23-Feb	A	3,712	A	1,311	A	1,311	A	1,125
9	23-Feb	2-Mar	A	3,712	A	1,311	A	1,311	A	1,125
10	2-Mar	9-Mar	A	3,712	A	1,311	A	1,311	A	1,125
11	9-Mar	16-Mar	A	3,712	A	1,311	A	1,311	A	1,125
12	16-Mar	23-Mar	A	3,712	A	1,311	A	1,311	A	1,125
13	23-Mar	30-Mar	A	3,712	A	1,311	A	1,311	A	1,125
14	30-Mar	6-Apr	A	3,712	A	1,311	A	1,311	A	1,125
15	6-Apr	13-Apr	A	3,712	A	1,311	A	1,311	A	1,125
16	13-Apr	20-Apr	A	5,237	A	1,744	A	1,744	A	1,505
17	20-Apr	27-Apr	A	5,237	A	1,744	A	1,744	A	1,505
18	27-Apr	4-May	A	5,237	A	1,744	A	1,744	A	1,505
19	4-May	11-May	A	5,237	A	1,744	A	1,744	A	1,505
20	11-May	18-May	A	5,237	A	1,744	A	1,744	A	1,505
21	18-May	25-May	A	5,237	A	1,744	A	1,744	A	1,505
22	25-May	1-Jun	A	6,363	A	2,226	A	2,226	A	1,911
23	1-Jun	8-Jun	A	6,363	A	2,226	A	2,226	A	1,911
24	8-Jun	15-Jun	A	6,363	A	2,226	A	2,226	A	1,911
25	15-Jun	22-Jun	A	6,893	A	2,436	A	2,436	A	2,089
26	22-Jun	29-Jun	A	6,893	A	2,436	A	2,436	A	2,089
27	29-Jun	6-Jul	A	9,177	A	Rent of entire Villa only	A	Rent of entire Villa only	A	Rent of entire Villa only
28	6-Jul	13-Jul	O	9,177	O	Rent of entire Villa only	O	Rent of entire Villa only	O	Rent of entire Villa only
29	13-Jul	20-Jul	O	9,177	O	Rent of entire Villa only	O	Rent of entire Villa only	O	Rent of entire Villa only
30	20-Jul	27-Jul	O	9,177	O	Rent of entire Villa only	O	Rent of entire Villa only	O	Rent of entire Villa only
31	27-Jul	3-Aug	O	9,177	O	Rent of entire Villa only	O	Rent of entire Villa only	O	Rent of entire Villa only
32	3-Aug	10-Aug	A	9,177	A	Rent of entire Villa only	A	Rent of entire Villa only	A	Rent of entire Villa only
33	10-Aug	17-Aug	A	9,177	A	Rent of entire Villa only	A	Rent of entire Villa only	A	Rent of entire Villa only
34	17-Aug	24-Aug	A	6,893	A	Rent of entire Villa only	A	Rent of entire Villa only	A	Rent of entire Villa only
35	24-Aug	31-Aug	A	6,893	A	Rent of entire Villa only	A	Rent of entire Villa only	A	Rent of entire Villa only
36	31-Aug	7-Sep	A	5,670	A	2,005	A	2,005	A	1,722
37	7-Sep	14-Sep	O	5,670	O	2,005	O	2,005	O	1,722
38	14-Sep	21-Sep	O	5,670	O	2,005	O	2,005	O	1,722
39	21-Sep	28-Sep	O	5,670	O	2,005	O	2,005	O	1,722
40	28-Sep	5-Oct	A	4,935	A	1,745	A	1,745	A	1,496
41	5-Oct	12-Oct	A	4,935	A	1,745	A	1,745	A	1,496
42	12-Oct	19-Oct	A	4,935	A	1,745	A	1,745	A	1,496
43	19-Oct	26-Oct	A	3,712	A	1,311	A	1,311	A	1,125
44	26-Oct	2-Nov	A	3,712	A	1,311	A	1,311	A	1,125
45	2-Nov	9-Nov	A	3,712	A	1,311	A	1,311	A	1,125
46	9-Nov	16-Nov	A	3,712	A	1,311	A	1,311	A	1,125
47	16-Nov	23-Nov	A	3,712	A	1,311	A	1,311	A	1,125
48	23-Nov	30-Nov	A	3,712	A	1,311	A	1,311	A	1,125
49	30-Nov	7-Dec	A	3,712	A	1,311	A	1,311	A	1,125
50	7-Dec	14-Dec	A	3,712	A	1,311	A	1,311	A	1,125
51	14-Dec	21-Dec	A	3,712	A	1,311	A	1,311	A	1,125
52	21-Dec	28-Dec	A	3,712	A	Rent of entire Villa only	A	Rent of entire Villa only	A	Rent of entire Villa only

Linens and Towel rental, optional: 38 EUR pr. person pr. week
Obligatory Final cleaning, electricity, heat and water: included



Mas du Vallon ground floor plan



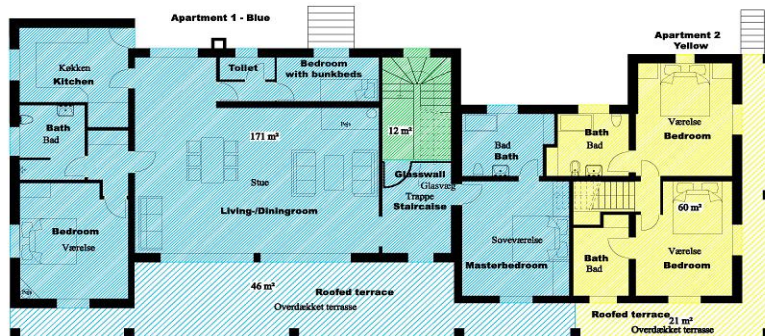
- Apartment 3**
Ljilighed 3 = 129 m² + 32 m² terrace
- Apartment 2**
Ljilighed 2 = 165 m² + 21 m² terrace
- Apartment 1**
Ljilighed 1 = 171 m² + 46 m² terrace
- Common area (outdoor)**
Felles arealer = 36 m² + 19 m² udendørs

I alt lejiligheder og felles arealer (indendørs) = 501 m² Total apartments and common area (indoor)
 Overdekkede terrasser og felles arealer (udendørs) = 118 m² Roofed terrace and common area (outdoor)

MasduVallon.com © Privacy



Mas du Vallon 1st. Level floor plan



- Apartment 3**
Ljilighed 3 = 129 m² + 32 m² terrace
- Apartment 2**
Ljilighed 2 = 165 m² + 21 m² terrace
- Apartment 1**
Ljilighed 1 = 171 m² + 46 m² terrace
- Common areal - outdoor**
Felles arealer = 36 m² + 19 m² udendørs

I alt lejiligheder og felles arealer (indendørs) = 501 m² Total apartments and common area (indoor)
 Overdekkede terrasser og felles arealer (udendørs) = 118 m² Roofed terrace/patio

MasduVallon.com © Privacy