



Mas du Vallon

Booking: info@masduvallon.com



**PRICELIST - BOOKING CALENDER - FLOOR PLANS 2023**  
All prices are in EURO

**Explanation:**

**A = Available**

**EV = Rent of entire Villa only**

**O = Occupied**

**R = Reserved**

**S = Special deal**

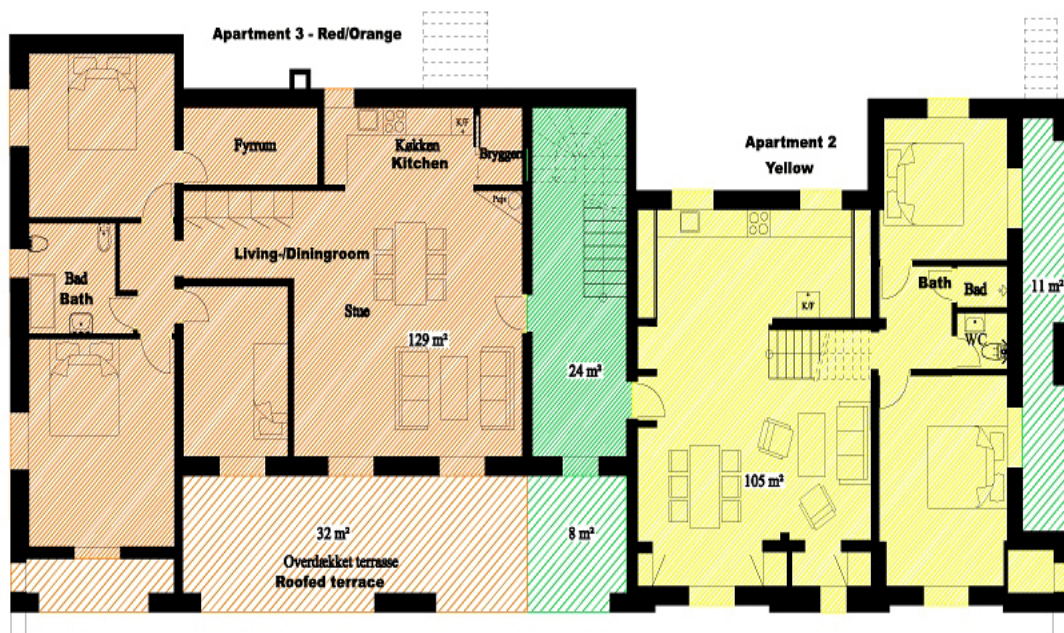
Week	From	To	Entire Villa		Apartment 1 1. floor (Blue) 8 person		Apartment 2 Ground right (yellow) 8 person		Apartment 3 Ground left (red/orange) 6 person	
			A	Price	EV/A	Price	EV/A	Price	EV/A	Price
1	31.dec	- 07.jan	A	3.535	EV/A	Rent of entire Villa only	EV/A	Rent of entire Villa only	EV/A	Rent of entire Villa only
2	07.jan	- 14.jan	A	3.535	A	1.249	A	1.249	A	1.072
3	14.jan	- 21.jan	A	3.535	A	1.249	A	1.249	A	1.072
4	21.jan	- 28.jan	A	3.535	R	1.249	R	1.249	R	1.072
5	28.jan	- 04.feb	A	3.535	A	1.249	A	1.249	A	1.072
6	04.feb	- 11.feb	A	3.535	A	1.249	A	1.249	A	1.072
7	11.feb	- 18.feb	A	3.535	A	1.249	A	1.249	A	1.072
8	18.feb	- 25.feb	A	3.535	A	1.249	A	1.249	A	1.072
9	25.feb	- 04.mar	A	3.535	A	1.249	A	1.249	A	1.072
10	04.mar	- 11.mar	A	3.535	A	1.249	A	1.249	A	1.072
11	11.mar	- 18.mar	A	3.535	A	1.249	A	1.249	A	1.072
12	18.mar	- 25.mar	A	3.535	A	1.249	A	1.249	A	1.072
13	25.mar	- 01.apr	A	3.535	A	1.249	A	1.249	A	1.072
14	01.apr	- 08.apr	A	3.535	A	1.249	A	1.249	A	1.072
15	08.apr	- 15.apr	A	3.535	A	1.249	A	1.249	A	1.072
16	15.apr	- 22.apr	A	4.750	A	1.661	A	1.661	A	1.424
17	22.apr	- 29.apr	A	4.750	A	1.661	A	1.661	A	1.424
18	29.apr	- 06.maj	A	4.750	A	1.661	A	1.661	A	1.424
19	06.maj	- 13.maj	A	4.750	A	1.661	A	1.661	A	1.424
20	13.maj	- 20.maj	A	4.750	A	1.661	A	1.661	A	1.424
21	20.maj	- 27.maj	A	4.750	A	1.661	A	1.661	A	1.424
22	27.maj	- 03.jun	A	6.060	A	2.120	A	2.120	A	1.820
23	03.jun	- 10.jun	A	6.060	A	2.120	A	2.120	A	1.820
24	10.jun	- 17.jun	O	6.060	O	2.120	O	2.120	O	1.820
25	17.jun	- 24.jun	A	6.565	A	2.320	A	2.320	A	1.990
26	24.jun	- 01.jul	A	6.565	A	2.320	A	2.320	A	1.990
27	01.jul	- 08.jul	A	8.740	A	Rent of entire Villa only	A	Rent of entire Villa only	A	Rent of entire Villa only
28	08.jul	- 15.jul	A	8.740	A	Rent of entire Villa only	A	Rent of entire Villa only	A	Rent of entire Villa only
29	15.jul	- 22.jul	A	8.740	A	Rent of entire Villa only	A	Rent of entire Villa only	A	Rent of entire Villa only
30	22.jul	- 29.jul	A	8.740	A	Rent of entire Villa only	A	Rent of entire Villa only	A	Rent of entire Villa only
31	29.jul	- 05.aug	A	8.740	A	Rent of entire Villa only	A	Rent of entire Villa only	A	Rent of entire Villa only
32	05.aug	- 12.aug	A	8.740	A	Rent of entire Villa only	A	Rent of entire Villa only	A	Rent of entire Villa only
33	12.aug	- 19.aug	A	8.741	A	Rent of entire Villa only	A	Rent of entire Villa only	A	Rent of entire Villa only
34	19.aug	- 26.aug	O	6.565	O	Rent of entire Villa only	O	Rent of entire Villa only	O	Rent of entire Villa only
35	26.aug	- 02.sep	O	6.565	O	Rent of entire Villa only	O	Rent of entire Villa only	O	Rent of entire Villa only
36	02.sep	- 09.sep	A	5.400	A	1.910	A	1.910	A	1.640
37	09.sep	- 16.sep	A	5.400	A	1.910	A	1.910	A	1.640
38	16.sep	- 23.sep	A	5.400	A	1.910	A	1.910	A	1.640
39	23.sep	- 30.sep	O	5.400	O	1.910	O	1.910	O	1.640
40	30.sep	- 07.okt	A	4.700	A	1.662	A	1.662	A	1.425
41	07.okt	- 14.okt	A	4.700	A	1.662	A	1.662	A	1.425
42	14.okt	- 21.okt	A	4.700	A	1.662	A	1.662	A	1.425
43	21.okt	- 28.okt	A	3.535	A	1.250	A	1.250	A	1.072
44	28.okt	- 04.nov	A	3.535	A	1.250	A	1.250	A	1.072
45	04.nov	- 11.nov	A	3.535	A	1.250	A	1.250	A	1.072
46	11.nov	- 18.nov	A	3.535	A	1.250	A	1.250	A	1.072
47	18.nov	- 25.nov	A	3.535	A	1.250	A	1.250	A	1.072
48	25.nov	- 02.dec	A	3.535	A	1.250	A	1.250	A	1.072
49	02.dec	- 09.dec	A	3.535	A	1.250	A	1.250	A	1.072
50	09.dec	- 16.dec	A	3.535	A	1.250	A	1.250	A	1.072
51	16.dec	- 23.dec	A	3.535	A	1.250	A	1.250	A	1.072
52	23.dec	- 30.dec	A	3.535	A	Rent of entire Villa only	A	Rent of entire Villa only	A	Rent of entire Villa only

**Linen and Towel rental, optional:** 38 EUR pr. person pr. week

**Obligatory Final cleaning, electricity, heat and water:** included



### Mas du Vallon ground floor plan

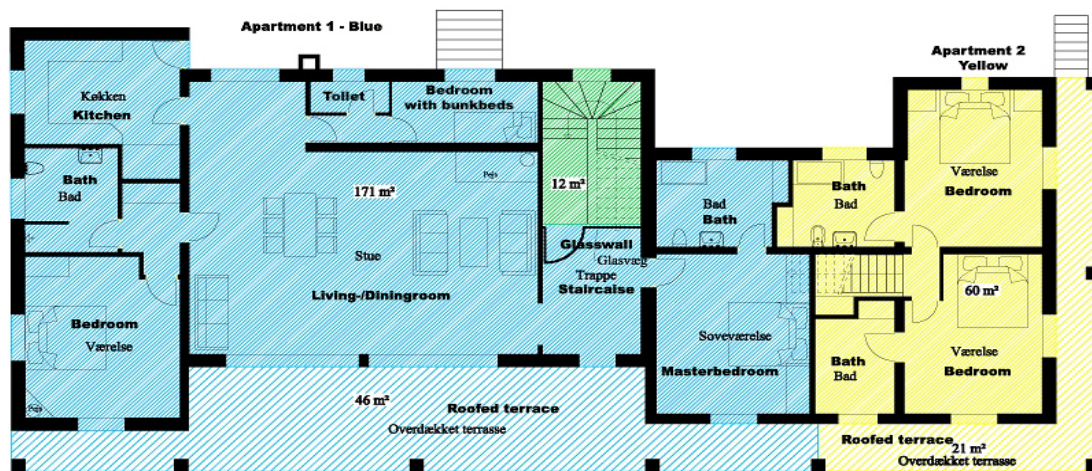


- Apartment 3**  
Lejlighed 3 = 129 m<sup>2</sup> + 32 m<sup>2</sup> terrasse
- Apartment 2**  
Lejlighed 2 = 165 m<sup>2</sup> + 21 m<sup>2</sup> terrasse
- Apartment 1**  
Lejlighed 1 = 171 m<sup>2</sup> + 46 m<sup>2</sup> terrasse
- Common area (outdoor)**  
Fælles arealer = 36 m<sup>2</sup> + 19 m<sup>2</sup> udendørs

I alt lejligheder og fælles arealer (indendørs) = 501 m<sup>2</sup> **Total apartments and common area (indoor)**  
 Overdækkede terrasser og fælles arealer (udendørs) = 118 m<sup>2</sup> **Roofed terrace and common area (outdoor)**



### Mas du Vallon 1st. Level floor plan



- Apartment 3**  
Lejlighed 3 = 129 m<sup>2</sup> + 32 m<sup>2</sup> terrasse
- Apartment 2**  
Lejlighed 2 = 165 m<sup>2</sup> + 21 m<sup>2</sup> terrasse
- Apartment 1**  
Lejlighed 1 = 171 m<sup>2</sup> + 46 m<sup>2</sup> terrasse
- Common areal - outdoor**  
Fælles arealer = 36 m<sup>2</sup> + 19 m<sup>2</sup> udendørs

I alt lejligheder og fælles arealer (indendørs) = 501 m<sup>2</sup> **Total apartments and common area (Indoor)**  
 Overdækkede terrasser og fælles arealer (udendørs) = 118 m<sup>2</sup> **Roofed terrace/patio**